

# **Delphish Installation instructions MS Outlook / Outlook Express**

Version 1.0  
February 2007  
Copyright © Nutzwerk GmbH

## 1 System requirements

### 1.1 Operating system

- Windows 2000
- Windows XP
- Windows 2000/2003 Server

### 1.2 Microsoft Outlook

*Delphish* is an *MS Outlook* add-in. You will need a previously installed *Outlook* program in order to be able to use the program. *Delphish* supports *Outlook* versions as of 2000.

### 1.3 RAM

The *Delphish* add-in will be integrated into *Outlook* in its entirety. This means the same storage capacity requirements are valid in this case which are also required for operating *Outlook*.

### 1.4 Hard disc space

The software itself will require approx. 5 MB of hard disc storage capacity after installation. In addition to this, a database is established which is required for on-going operation. The size of the file in turn will depend on how intensively you work with *Outlook*. In case of normal operation, the size of the file will be less than 1 MB.

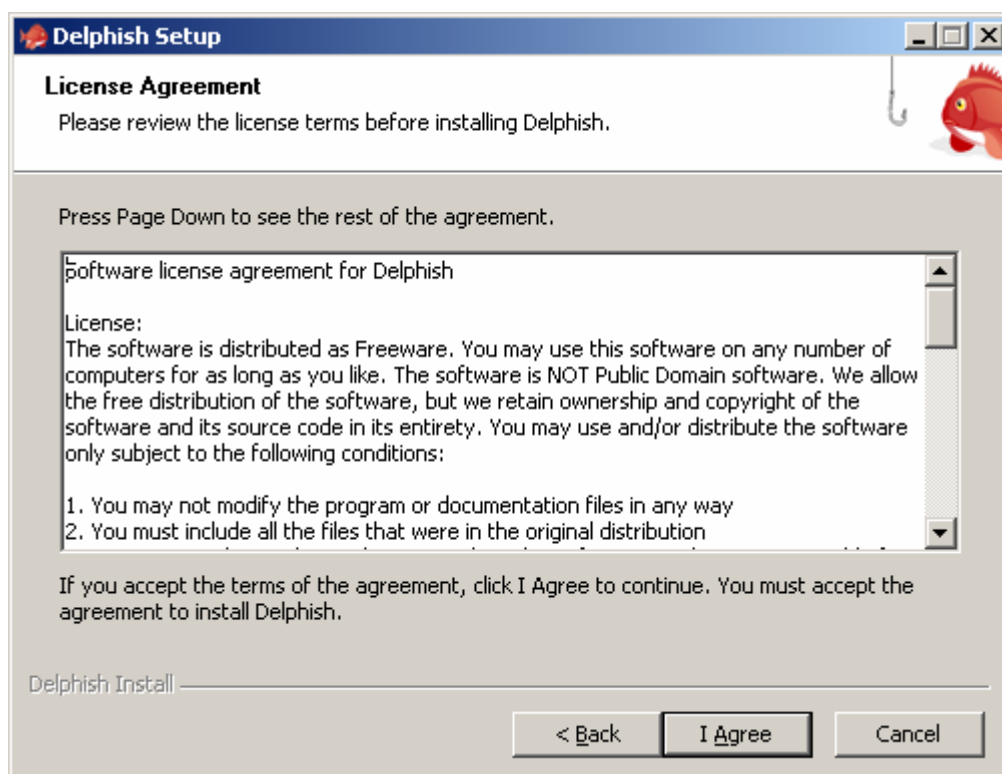
## 2 Installation of Delphish

- Download the *Delphish* installation program of *delphish-setup.exe* (approx. 2 MB) onto your computer.
- In case you have already opened *Microsoft Outlook*, please close this application prior to the installation.
- Afterwards, execute the file which you have downloaded.
- The installation program starts by displaying the following screen:

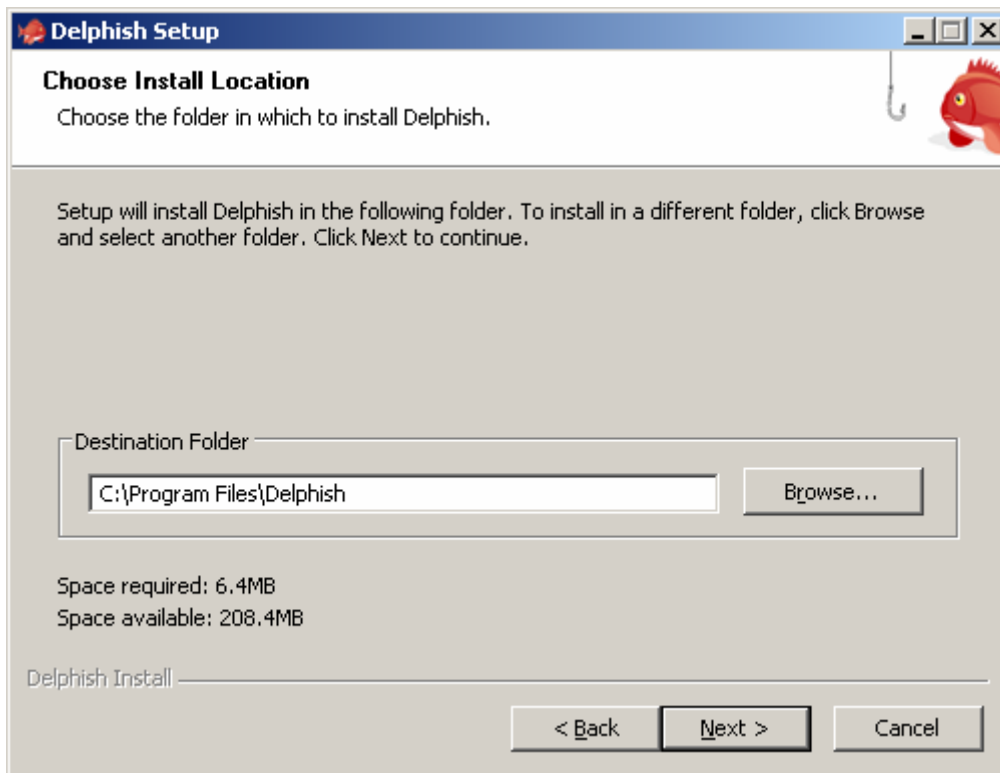


Click on *Next*.

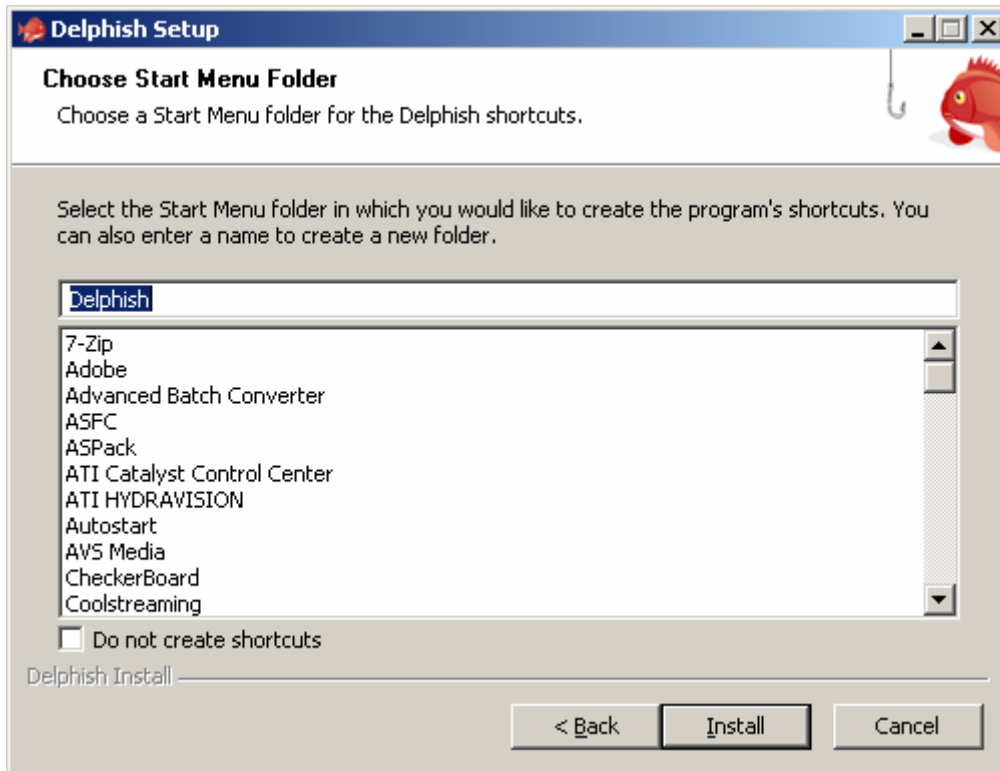
- Read the terms of the license carefully and click on *I Agree*. In case you do not accept the terms, operate the button *Cancel* in order to cancel the installation.



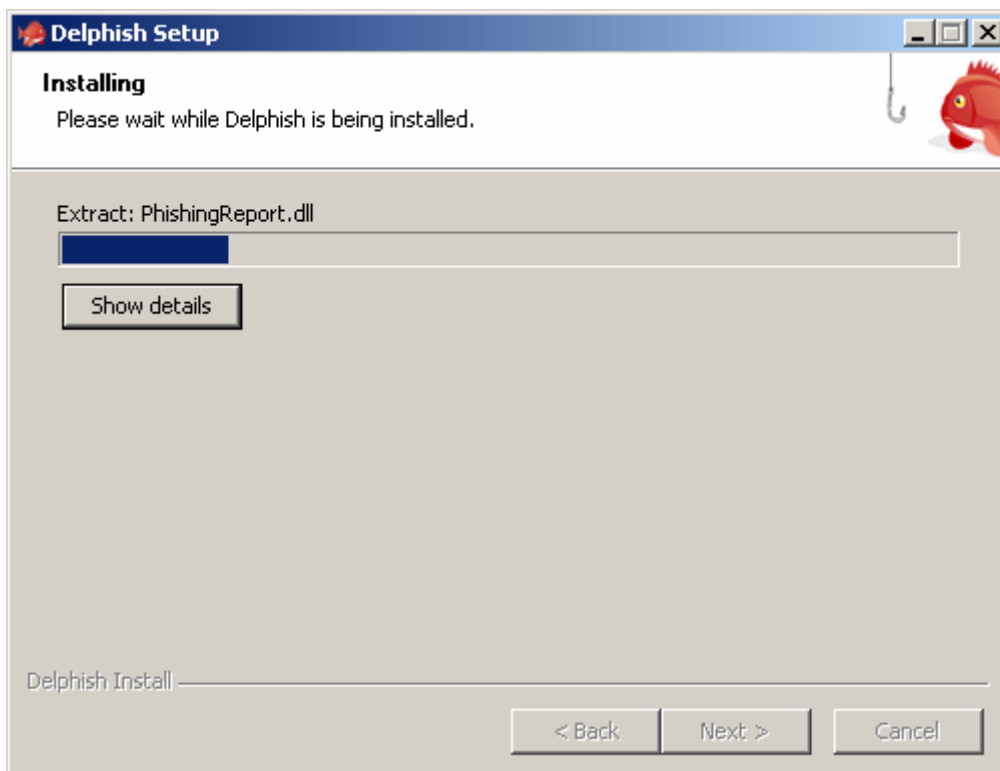
- Select the installation folder in the following window. In the lower section, the storage capacity required for the installation and available on the data carrier selected by you is displayed. Afterwards, you operate the button *Continue*.



- As a next step, you will be requested to determine the Start Menu Order for the shortcuts established by *Delphish*. You can select the folder of *Delphish* which is proposed. Upon the selection of the option *Do not create shortcuts*, you dispense with the establishment of *Delphish* shortcuts.



- Once you have specified the installation options, *Delphish* is installed on your computer. The progress bar indicates the progress of installation. You can interrupt the establishment at any time by operating the button *Cancel*.



- After successful installation the following screen is displayed:



This concludes the installation of *Delphish*. Upon the next start of *Microsoft Outlook* the add-in is loaded automatically.